

## How to use 315MHz remote relay switch kits - 2 channels

### 1. Relay module part

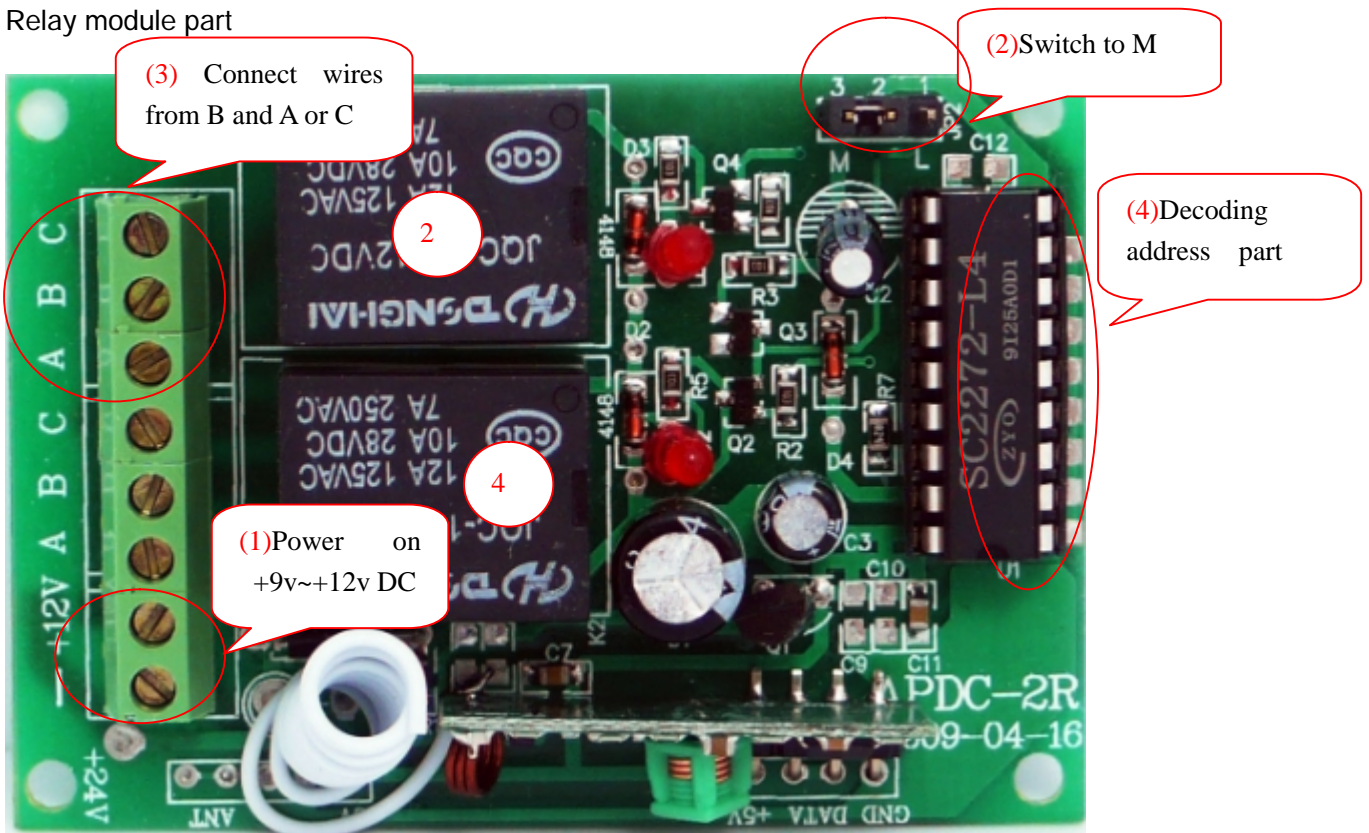


Fig 1 Relay module

(1) Power on +9V~+12V DC

(2) Move the switch to M, which means momentary.

(3) Connect wires from B and A or C.

B-Common Node

A-Normally Closed (connected to B), Open when relay activate

C-Normally Open, Close (connected to B) when relay activate

(4) Decoding address part.

If you only use one set of remote relay switch kits, then just leave the address pins of SC2272-L4 alone, and you need to do nothing.

## 2. Wireless controller part

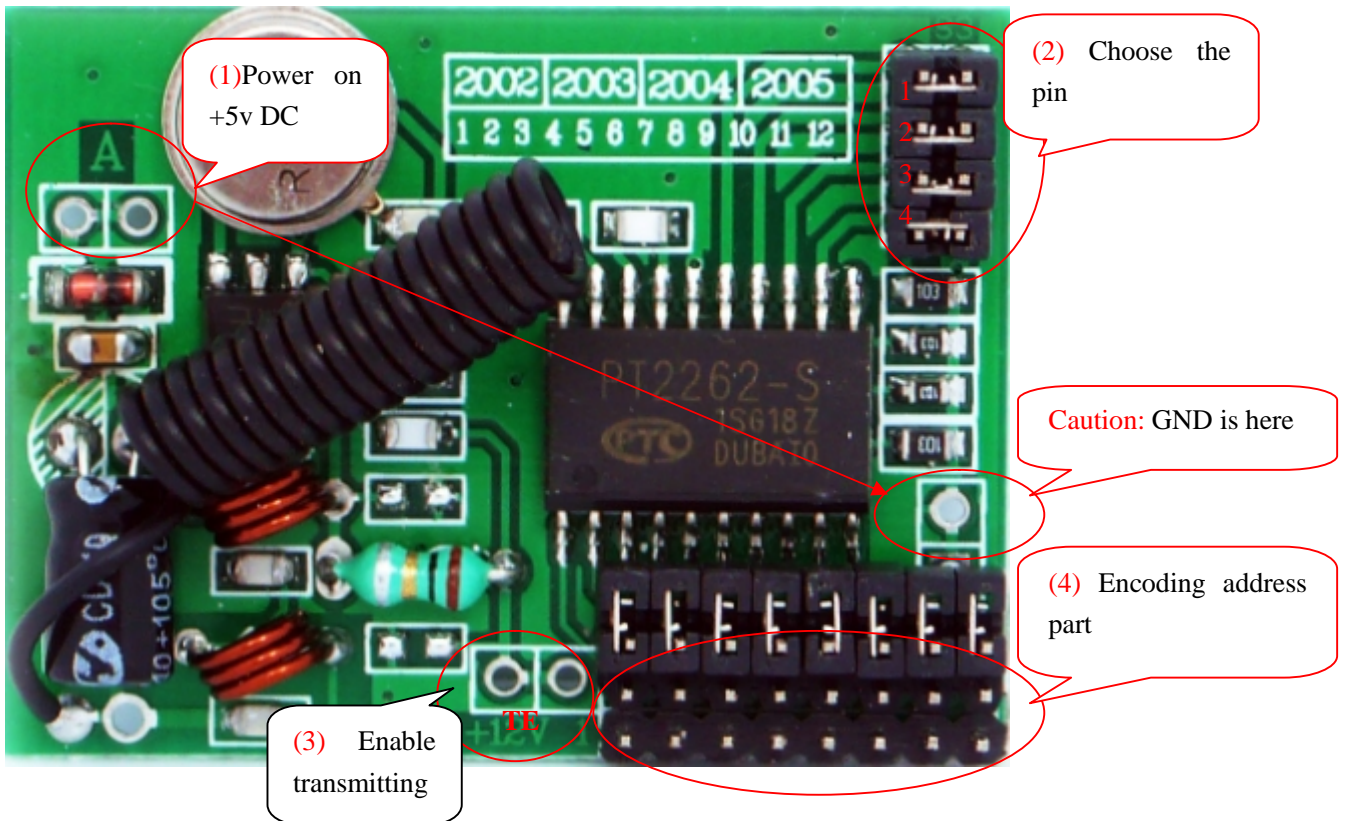


Fig 2 Wireless controller part

(1) Power on +5v DC.

(2) Choose the pins corresponding with remote relays you want to control.

- 1- Useless for 2 channels remote relay switch
- 2- Correspond with relay labeled 2 on figure 1.
- 3- Useless for 2 channels remote relay switch
- 4- Correspond with relay labeled 4 on figure 1.

First remove all the shunts, and then connect the pin 2 or/and pin 4 to +5v.

(3) Enable transmitting.

By connecting the pin TE to +5v, the controller will transmit the encoded info to the remote relay. And the relay 2 or 4 (depending on the pins chosen on wireless controller part) will activate as soon as the module

receives the info.

Keeping TE high making controller always transmits, and the relay will keep activating. When pull TE low, the controller stop transmitting, and relay will return to its normal state.

(4) Encoding address part.

If you only use one set of remote relay switch kits, then just leave the address pins of SC2272-L4 alone, and you need to do nothing.

If there are two or more sets of relay switch, and you want them to be controlled individually by two or more corresponding wireless controller, then the module must be configured with different address.

The way to address the module is also very easy. You may need to do some soldering, just make sure the address on relay module and controller the same (paired).

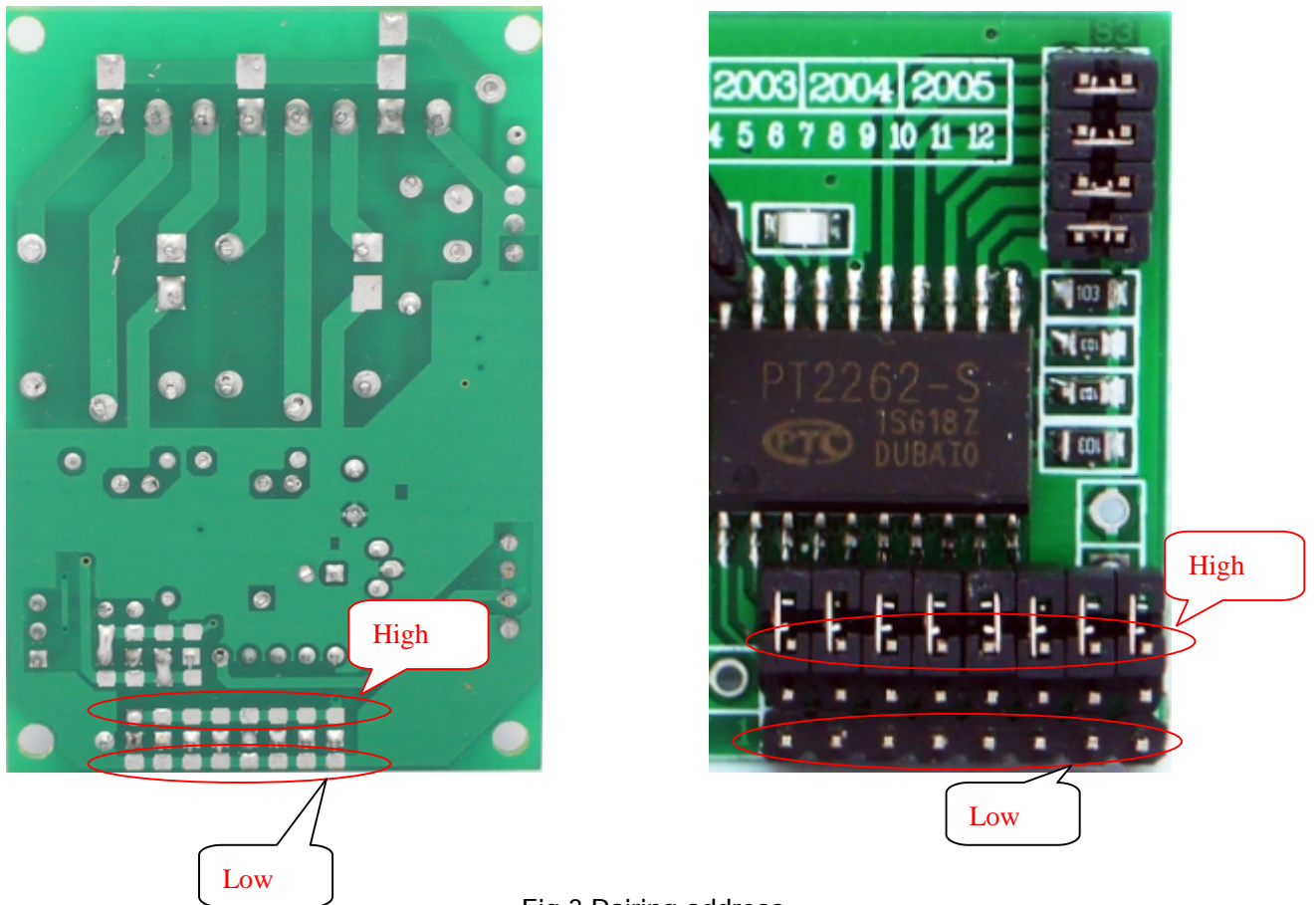


Fig 3 Pairing address

Note: The pins corresponding with remote relays and the pin TE can be also controlled by MCU making it more flexible.

[www.seeedstudio.com](http://www.seeedstudio.com)

2010-3-29